

Great Tyne Row

Saturday, 17 August 2013

Safety and Emergency Plan





Safety & Emergency Plan

Contents

- 1.0 Event Structure
 - 1.1 Safety structure
 - 1.2 Craft permitted
- 2.0 Event Contingencies
 - 2.1 Adverse Weather Conditions
 - 2.2 Commercial Boating Activity
- 3.0 Emergency Situations
 - 3.1 Sinking
 - 3.2 Man Overboard
 - 3.3 Spectator / Event Staff falling in water
 - 3.4 Fire Onboard Safety/Marshalling Launch
 - 3.5 Mechanical malfunction on Safety/Marshalling Launch
 - 3.6 Craft Grounding
- 4.0 Command & Control
- 5.0 Actions
 - 5.1 Event Control
 - 5.2 On Scene Commander
 - 5.3 Observer / First on scene
 - 5.4 Other craft
 - 5.5 Boat/Rowing Clubs
 - 5.6 Landing areas
 - 5.7 Boat recovery
- 6.0 Schedule & Timing
 - 6.1 Tidal Times
 - 6.2 Event Running Order
- 7.0 Safety Craft, Event Safety Marshal
 - 7.1 Safety Craft
 - 7.2 Event Safety Marshal
 - 7.3 Boat/Rowing clubs
- Appendix 1 Navigation
- Appendix 2 Risk Assessment
- Appendix 3 Information for Crews



Safety & Emergency Plan

1.0 Event Structure

Crews will row from Newburn to Priors Haven, Tynemouth, covering approximately 15 miles/25 km. Participating boats will start in divisions based on entrant type (women's, mixed and open crews) and boat type (quad, double, skiff, etc). These shall start at about 10 minute intervals, each division starting in a fleet racing side-by-side style. Crews will then row in progression along the River Tyne. Crews may overtake. Crews may rotate seats with coxswain.

1.1 Safety Structure



Crews will row in progression (with overtaking allowed) along the course on the River Tyne.

All crews are expected to render assistance to any crew they see in difficulties.

Safety cover will be provided; these launches will be responsible for the participants' safety on the course. In addition to this, Port of Tyne will provide a lead safety craft.

Two launches will oversee the start, while the remaining craft are in position along the rest of the course. The Port of Tyne safety craft will lead and one launch shall trail the progression for the duration of the course while the remaining craft will be in fixed positions and only move once all craft have passed.

The Port of Tyne craft shall remain ahead of the progression at all times and no boat is permitted to race ahead of the Port of Tyne craft.

Port of Tyne may halt the progression at any time.

1.2 Craft Permitted

The boats in use will be a mixture of touring or coastal going boats both fixed and sliding seat. These boats are much wider and more robust than 'fine' racing boats with the shape and design better for dealing with waves and manoeuvrability in rougher water. The design greatly reduces the likelihood of capsizing or sinking. No fine racing shells or coxless boats will be allowed to enter the event.



Safety & Emergency Plan

2.0 Event Contingencies

The Terms & Conditions of Entry state: 'If the event is unable to take place due to unforeseen circumstances or is cancelled by the Event Safety Advisor due to unsafe water and/or weather conditions, the Event Organiser will endeavour to stage the event at a later date, but if this is not possible the Event Organiser will be entitled to cancel the event.'

2.1 Adverse Weather Conditions

The Event Safety Advisor has the authority to cancel the event if they deem the weather and/or water conditions to be detrimental to the safety of participants and/or event support staff. The Event Safety Advisor may also cancel or postpone the event if the weather forecast is adverse to avoid nugatory travel by competitors.

2.2 Commercial Boating Activity

The Harbour Master of the Port of Tyne has the authority to restrict the event from continuing past Bills Quay. In this event, the Harbour Master shall inform the Event Safety Advisor of his decision to limit the event to Bill Quay.

Actions shall be:

- Event Safety Advisor shall decide whether the race is concluded or if crews may row back to Newburn.
- Event Safety Advisor shall inform safety launches of the decision, who will then be responsible for passing this information onto event crews.
- Crew captains and coxes shall be instructed to make their way to the designated landing point (ref 5.6, pg 8) or return to Newburn.

3.0 Emergency Situations

The following situations are deemed to be both reasonably foreseeable occurrences and within the scope of this Plan. In all cases, the first response is to raise the alarm. In All cases competitors should be prepared to stop and assist, especially if there are no rescue craft in sight.

3.1 Swamping

This may be a rowing craft, a safety or marshalling launch. The vessel may be sinking due to a collision or some structural failure. Persons in the water are likely to range from one to ten people. The worst foreseeable situation would be the collision of two rowing craft which would result in ten casualties.

Actions should be:

- Raise the alarm



Safety & Emergency Plan

- Retrieve that casualties from the water
- Establish that all persons are accounted for
- Take casualties to agreed landing point (ref 5.6, pg 8) for assessment, treatment or transfer
- Mark, make safe or otherwise retrieve the craft

3.2 Man Overboard

Person falling from any craft into the water. Likely to be one individual but foreseeable that when assisting the recovery of man overboard another individual falls in.

Actions should be:

- Raise the alarm
- Retrieve the casualty from the water
- Establish that all casualties are accounted for
- Take casualty to agreed landing point (ref 5.6, pg 8) for assessment, treatment or transfer
- Review boat safety and supplement or withdraw as necessary

3.3 Spectator / Event Staff falling in water

A person falling in the water from the shore. Likely to be one individual but foreseeable that when assisting the recovery of casualty another individual falls in.

Actions should be:

- Raise the alarm
- Retrieve the casualty from the water
- Establish that all personal are accounted for
- Take casualty to agreed landing (ref 5.6, pg 8) point for assessment, treatment or transfer
- Review safety of shore area and supplement or withdraw as necessary

3.4 Fire Onboard Safety/Marshalling Launch

Any craft with an engine is capable of catching fire.

Actions should be:

- Raise the alarm
- Use portable appliances to fight the fire
- If possible, make way to nearest landing point (ref 5.6, pg 8)
- Make preparations to abandon the craft
- Assign other boats to standby to lend assistance and possibly retrieve casualties from water



Safety & Emergency Plan

3.5 Mechanical malfunction on Safety/Marshalling Launch

Any craft with an engine is capable of becoming disabled.

Actions should be:

- Raise the alarm
- Assign a suitable craft (with sufficient power and rope for towing) to assist disabled craft
- Tow disabled craft to nearest access point
- If resources permit, have second craft on standby to lend further assistance

3.6 Craft Grounding

The event shall follow the high tide out and the river is scheduled for a small (shallow) tide, therefore there is little risk for craft grounding. However, in the event of craft grounding a quick response is vital as the situation shall progressively worsen with the falling tide. The next high tide is not due until 01:15 BST on 18 August, which means that waiting for the water to rise and floating off the craft is not an option.

Actions should be:

- Raise the alarm
- Assign a suitable craft (with sufficient power and rope for towing) to assist grounded craft
- Explore reasonable ways to lessen the weight of the craft with consideration to the well-being of the occupants
- Float or tow craft off the mud
- If resources permit, have second craft on standby to lend further assistance

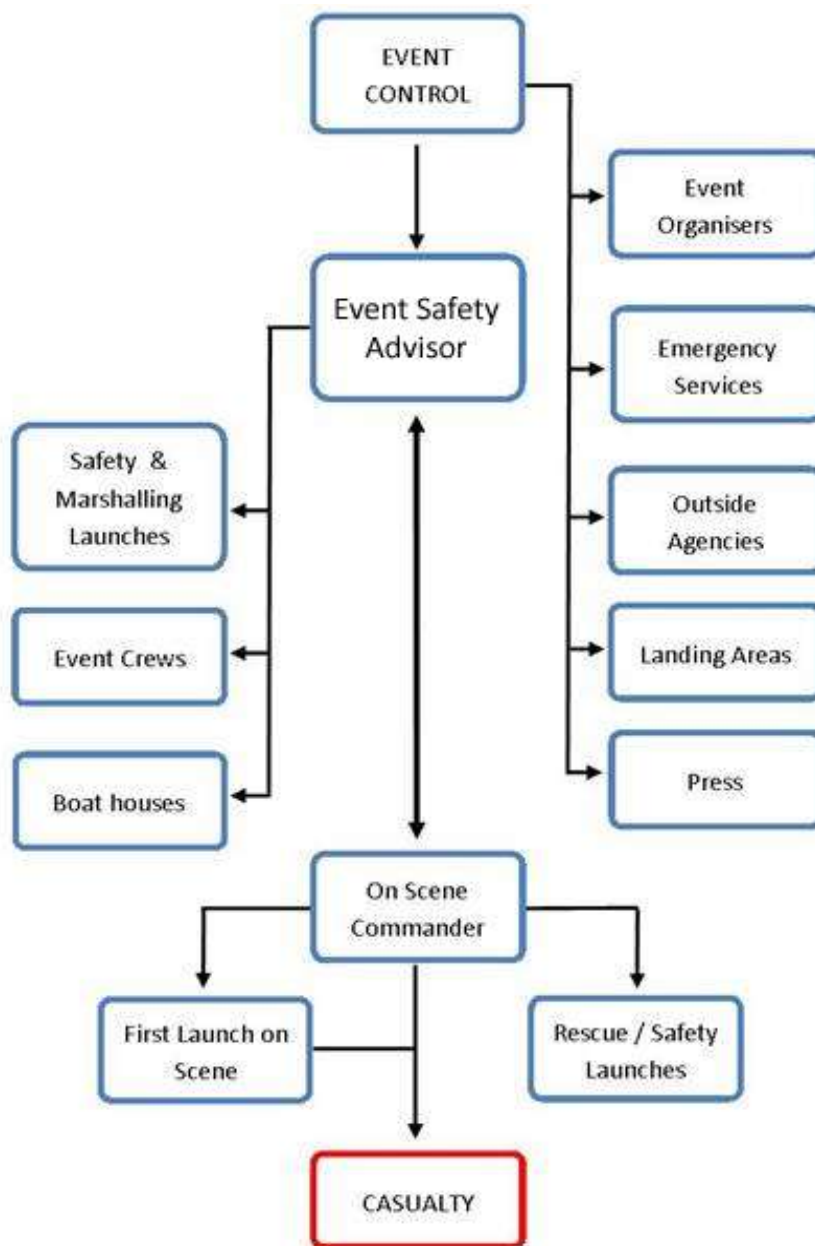


Safety & Emergency Plan

4.0 Command & Control

Any water based incident could be part of a bigger overall emergency. Staff and structures would be at the disposal of any overall incident commander, but this document outlines only responses to either incidents solely on the water or the marine aspect of a wider incident.

Apart from any police transmissions, all other traffic shall be on VHF Channel 11 where available and otherwise by mobile phone.





Safety & Emergency Plan

5.0 Actions

5.1 Event Safety Adviser

After receiving an alert of a marine incident the initial response would be for Event Safety Adviser to despatch the nearest craft to investigate.

On receiving a report from the first craft on scene, Event Safety Adviser would then make the decision as to whether any additional resources were necessary and despatch as appropriate.

If so, in addition to any other craft despatched, a Port of Tyne craft would attend to act as 'on scene commander'.

Once the 'on scene commander' was on site then Event Safety Adviser would:

- Act as liaison between on scene command and overall Event Control
- Act as liaison with the other emergency services
- Ensure other marine resources were dispatched to the scene
- Control non-emergency aspects of the event
- Issue advice, agree best landing points and advise emergency services as required
- Issue stand down on completion

5.2 On Scene Commander

On arrival this craft would take charge of the situation and:

- Make further assessment of the situation
- Request additional resources (directly or through event control)
- Direct other craft to task on the scene
- Control communications between incident and Event Safety Marshal
- Ensure event control are aware of boat number, casualty numbers and intended landing point
- Keep event control updated as to status of rescue

5.3 Observer / First on scene

The first craft on scene or to observe an incident should:

- Contact Event Safety Adviser by VHF or phone and proceed to the scene
- Make an assessment of the situation and report to Event Safety Marshal
- Render assistance
- Following instructions from event control or on scene commander upon their arrival



Safety & Emergency Plan

5.4 Other craft

Unless obvious that the incident is major and requires significant immediate rescue capabilities all other craft should remain on station.

- Follow instructions from event control or on scene commander
- Be aware that in general all participants are fit, active people and would survive for quite some time in the water
- If heading for casualties do so with reasonable haste but consider wash and the possibility of swamping other craft upon approach
- Approach slowly and use paddles or a throw line for the final approach
- Watch out for people in the water
- When rescuing those in the water, target those who seem in distress or in a state of unconsciousness before those who are faring better
- When returning to landing point or other craft consider wash

5.5 Boat/Rowing Clubs

Event Control with assistance from launch site rowing clubs shall be responsible for recording the launch of boats and the number of people on board.

5.6 Landing areas

The following areas have been designated as landing points for casualties **BEFORE** Bills Quay:

Name	Postcode	Contact
Derwenthaugh Marina	NE21 5LL	0191 414 0065
Newcastle City Marina Pontoon	NE1 3AL	0191 221 1348
HMS Calliope Pontoon	NE8 2BE	0191 477 2536
Friars Goose Water Sports Club	NE10 0QH	0191 469 2952

The following areas have been designated as landing points for casualties **AFTER** Bills Quay:

Name	Postcode	Contact
Royal Quays Marina Pontoon	NE29 6DU	0191 272 8282

5.7 Boat recovery

The following areas have been designated as boat recovery points **BEFORE** Bills Quay:

Name	Postcode	Contact
Derwenthaugh Marina	NE21 5LL	0191 414 0065
Newcastle City Marina Pontoon	NE1 3AL	0191 221 1348
HMS Calliope Pontoon	NE8 2BE	0191 477 2536
Friars Goose Water Sports Club	NE10 0QH	0191 469 2952



Safety & Emergency Plan

The following areas have been designated as boat recovery points **AFTER** Bills Quay:

Name	Postcode	Contact
Royal Quays Marina Pontoon	NE29 6DU	0191 272 8282

In an emergency there may be other facilities that are utilised. As a minimum requirement these access points would facilitate the transfer of a casualty into the care of emergency services. Access points as detailed:

Name	Postcode	Contact
Fozzards Pontoon	NE1 - Quayside	0191 221 1363
Anzio Pontoon	NE6 1BU	01912 249 832
Ouseburn Watersports Pontoon	NE6 1BU	

6.0 Schedule & Timing

All times shown in local British Summer Time (BST).

6.1 Tide Times

Tide times for Sunday 17th August, 2013

Time (BST)	Metres
06:33	1.62
12:45	4.38
19:12	1.57

Sunrise **05.49**

Solar noon **13.05**

Sunset **20:19**

6.2 Event Running Order

Time (BST)	Activity
12:30 onwards	Participating boats to launch from Tyne RC & Tyne United RC steps, Safety boats to on water beforehand.
13:00	First Race Start
13:00-13:40	Different categories start every 10 minutes
13:30 – 15:30	Boats pass through Quayside Bridges (10km)
14:15 – 16:00	Boats pass Bills Quay (15km)
14:50 – 17:00	Boats pass Morston Quay (20km)
15:30 – 18:00	FINISH – Boats arrive at Tynemouth
19:00	Any boats not finished will be directed to nearest access point
15:30 – 21:00	Boats trailered at North Tyneside Council car park



Safety & Emergency Plan

7.0 Safety Craft, Event Safety Control

7.1 Safety Launches and Radio Points

Name	Crew	Comms	Rescue Capacity
Port of Tyne	2	Mobile Phone & VHF	n/a
Safety Launch 1	2	Mobile Phone	TBC
Safety Launch 2	2	Mobile Phone	TBC
Safety Launch 3	2	Mobile Phone	TBC
Safety Launch 4	2	Mobile Phone	TBC
Safety Launch 5	2	Mobile Phone	TBC
Safety Launch 6	2	Mobile Phone & VHF	TBC
Safety Launch 7	2	Mobile Phone & VHF	TBC
Safety Launch 8	2	Mobile Phone & VHF	TBC
Safety Launch 9	2	Mobile Phone & VHF	TBC
Tynemouth RC Launch	2	Mobile Phone	TBC
Total Rescue Capacity			TBC

7.2 Event Safety Control

Location	Function	Name	Mobile phone
Port of Tyne vessel	Event Safety Adviser	John Mulholland	07740 078023
On land moving with boats	Event Control	Colin Percy	07985 003304
On land moving with boats	British Rowing	James Andrews	07818 576142

7.3 Boat/Rowing clubs

Boat House	Contact	Phone	Postcode
Tyne RC	Colin Percy	07985 003304	NE15 8NL
Tyne United RC	Chris Smith	07961 554813	NE15 8NR
Tynemouth RC	Claire McGuire	07811 879447	NE30 4DG

Colin Percy

GTR Coordinator for Northern Rowing Council

Mob: 07985 003304

Email: greattynrow@gmail.com

V1 18-07-13